



Beaufort County Public Works Stormwater Infrastructure Project Summary

Project Summary: Salem Drive East Phase II

Activity: Drainage Improvement

Narrative Description of Project:

Completion: Jun-13

Project improved 320 L.F. of drainage system. Grubbed and cleared 360 L.F. of channel. Installed (3) catch basins, 320 L.F. of outfall pipe, rip rap and hydroseeded for erosion control.

2013-014 / Salem Drive East Phase II	Labor Hours	Labor Cost	Equipment Cost	Material Cost	Contractor Cost	Indirect Labor	Total Cost
APINS / Access pipe - installed	21.0	\$473.20	\$28.14	\$18.00	\$0.00	\$185.22	\$704.56
AUDIT / Audit Project	1.5	\$31.34	\$0.00	\$0.00	\$0.00	\$19.85	\$51.18
BKFILL / Back Fill	28.0	\$584.92	\$360.42	\$164.78	\$0.00	\$370.44	\$1,480.56
BW / Bobcat Work	10.0	\$208.90	\$62.29	\$13.00	\$0.00	\$132.30	\$416.49
HAUL / Hauling	241.5	\$5,495.57	\$2,424.20	\$7,016.53	\$0.00	\$3,371.37	\$18,307.66
HYDR / Hydroseeding	40.0	\$834.80	\$130.16	\$391.48	\$0.00	\$529.20	\$1,885.64
ODGRB / Outfall ditch - grubbed	44.0	\$1,017.18	\$367.46	\$67.80	\$0.00	\$371.70	\$1,824.14
OFPI / Outfall Pipe - Installation	169.5	\$3,841.74	\$1,069.32	\$7,438.97	\$0.00	\$1,618.70	\$13,968.73
ONJV / Onsite Job Visit	90.0	\$2,354.89	\$357.78	\$132.45	\$0.00	\$1,778.76	\$4,623.88
PROFS / Professional Services	0.0	\$0.00	\$0.00	\$0.00	\$1,700.00	\$0.00	\$1,700.00
PRRECON / Project Reconnaissance	4.5	\$113.12	\$10.05	\$12.00	\$0.00	\$79.90	\$215.07
STAGING / Staging Materials	62.0	\$1,421.04	\$141.77	\$69.70	\$0.00	\$618.45	\$2,250.96
UTLOC / Utility locates	1.0	\$20.89	\$0.00	\$0.00	\$0.00	\$13.23	\$34.12
WSDR / Workshelf - Dressed	128.0	\$2,915.34	\$832.45	\$350.74	\$0.00	\$1,306.62	\$5,405.15
WGRB / Workshelf - Grubbed	70.0	\$1,539.60	\$84.42	\$34.35	\$0.00	\$1,013.40	\$2,671.77
2013-014 / Salem Drive East Phase II Sub Total	911.0	\$20,852.52	\$5,868.46	\$15,709.78	\$1,700.00	\$11,409.13	\$55,539.89
Grand Total	911.0	\$20,852.52	\$5,868.46	\$15,709.78	\$1,700.00	\$11,409.13	\$55,539.89

Before



During



After



**Project: Salem
Drive East Outfall
Phase II**

**Activity: Drainage
Improvement**

**Project #:
2013-014**

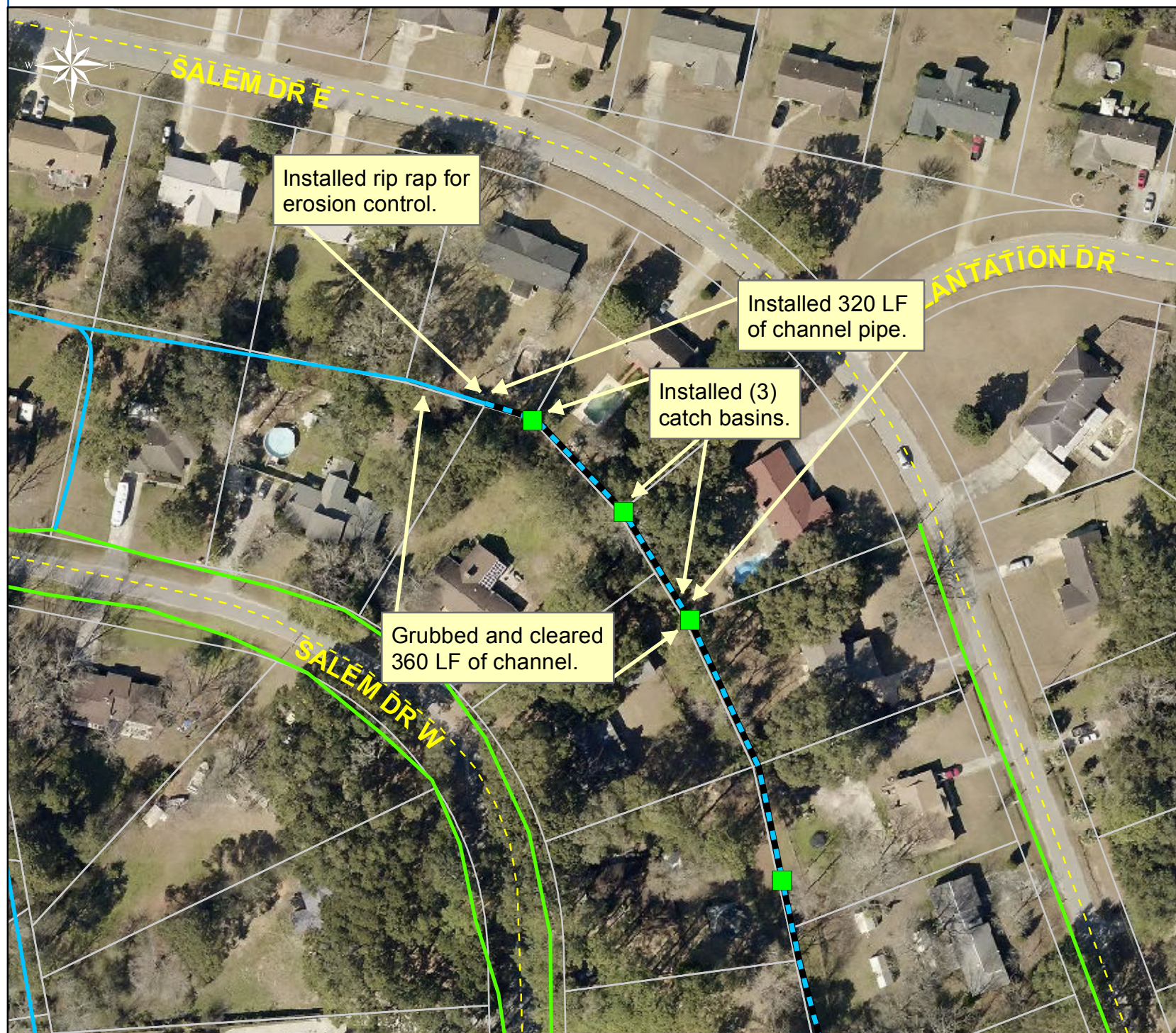
**Township: Port
Royal Island**

**Completed:
June 2013**

Legend

TYPE

- River
- Creek/Stream
- River/Creek/Marsh BANK
- Channel (fka Outfall)
- Channel Pipe
- Lateral
- Lateral Pipe
- Roadside
- Roadside Pipe
- Road Pipe
- Crossline Pipe
- Driveway Pipe
- Access Pipe
- Bleeder Pipe



0 25 50 100 150 200
Feet

1 inch = 107 feet

Prepared By: BC Stormwater Management Utility

Date Print: 7/29/13

File: C:\sethdata\projects\projectmaps\Salem Dr E Ph II 2013-014